

IP DOMINATED MUNICIPALITIES

ILOCOS NORTE

1. Dumalneg
2. Adams
3. Carasi
4. Nueva Era

ILOCOS SUR

1. Alilem
2. Banayoyo
3. Burgos
4. Cervantes
5. Galimuyod
6. G. del Pilar
7. Lidlidda
8. Nagbukel
9. Quirino
10. Salcedo
11. San Emilio
12. Sigay
13. Sugpon
14. Suyo

LA UNION

1. Bagulin
2. Burgos
3. Pugo
4. San Gabriel
5. Santol
6. Sudipen

PANGASINAN

1. San Nicolas (San Felipe East, Fianza & Malico)
2. Sison

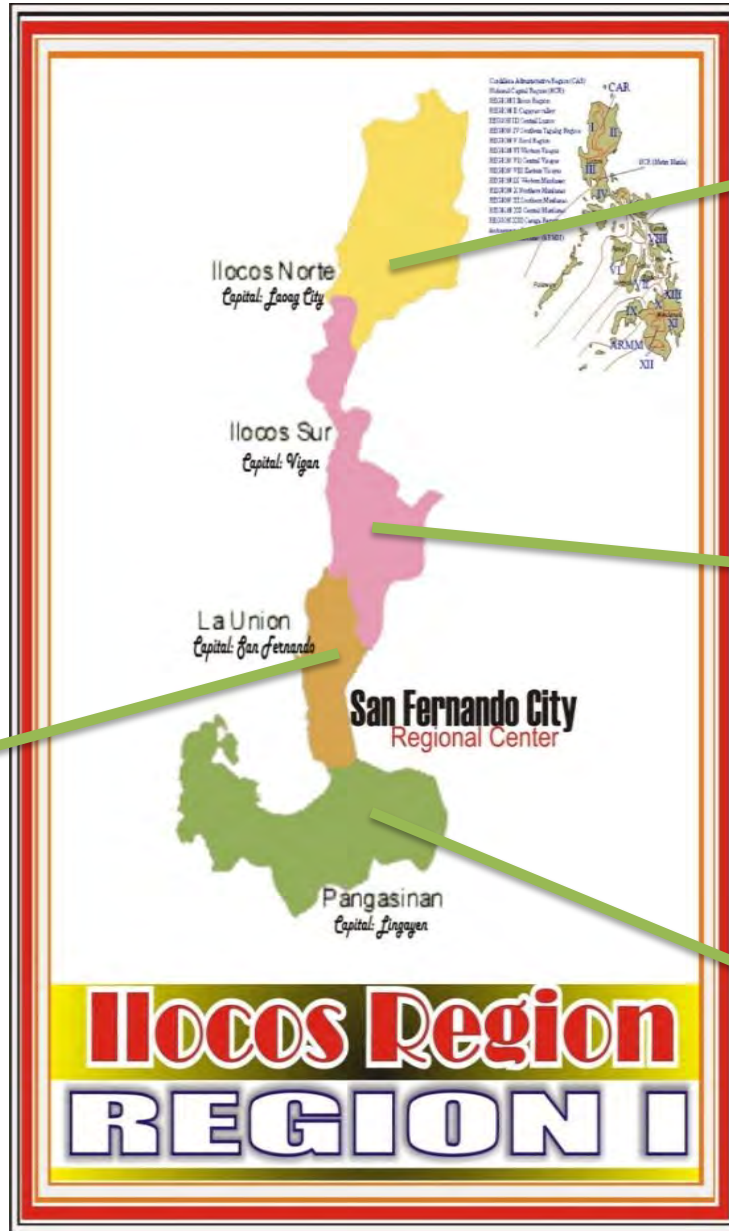
REGION 1



DEMOGRAPHY OF REGION I

REGION 1

Total Population:
4,748,372
Total Brgys.: 3,365
Total Muns.: 117
Total Cities: 8
Total Districts: 12
Prov.: 4



ILOCOS NORTE

Total Pop: 568,017
Total Brgys.: 557
Total Muns.: 22
Total Cities: 2
Total Dists.: 2

ILOCOS SUR

Total Pop: 658,587
Total Brgys.: 768
Total Muns.: 32
Total Cities: 2
Total Dists.: 2

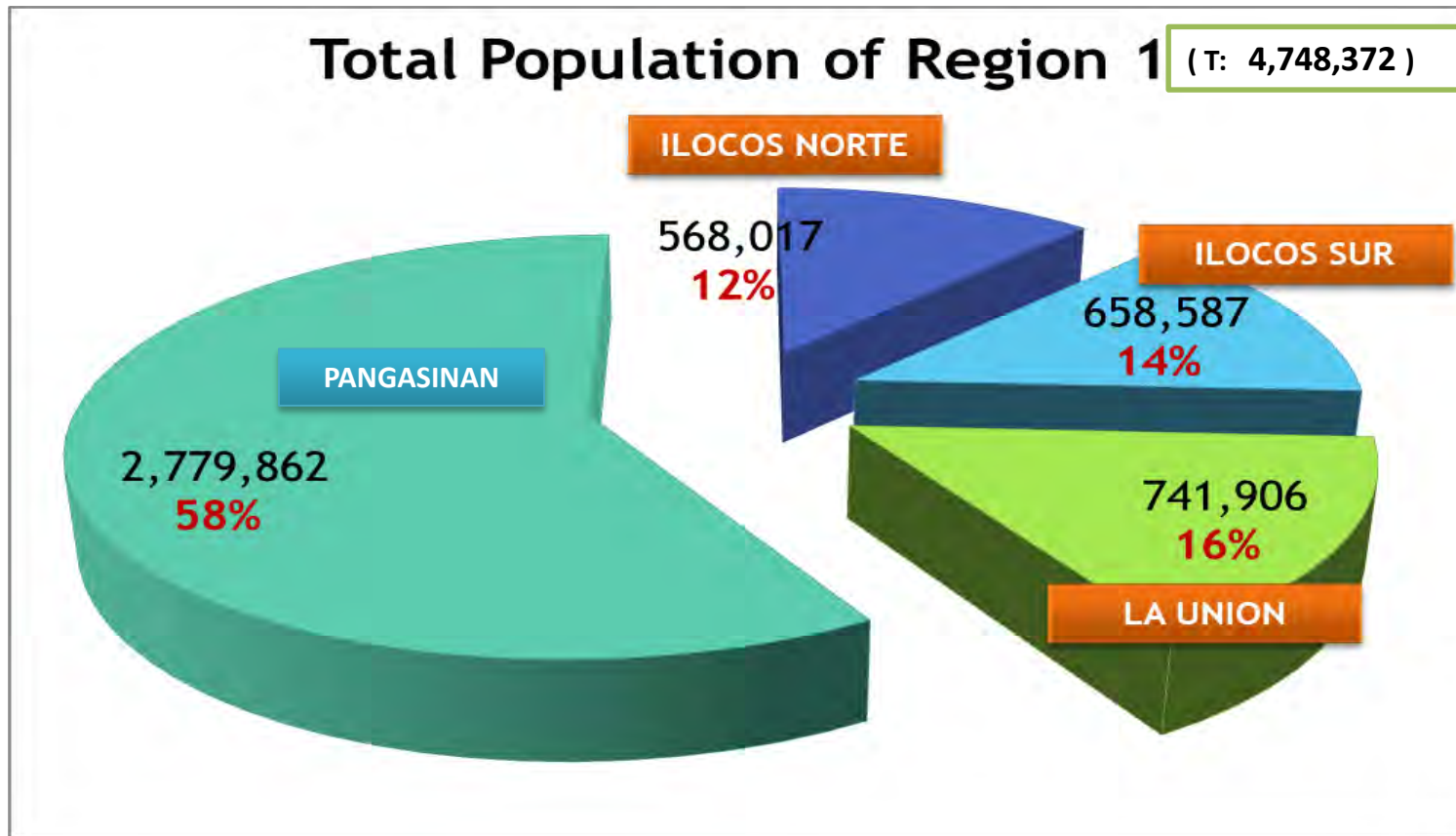
LA UNION

Total Pop: 741,906
Total Brgys.: 576
Total Muns.: 19
Total Cities: 1
Total Dists.: 2

PANGASINAN

Total Pop: 2,779,862
Total Brgys.: 1,364
Total Muns.: 44
Total Cities: 4
Total Dists.: 6

DEMOGRAPHY OF REGION I



- The total population of Region 1 based from the 2010 Census and Housing Population is **4,748,372**. The province of Pangasinan gets the largest share of 58% comprising 2.7 Million population and even larger than the total population of the 3 provinces which accounts to 1.9 M.

IP DEMOGRAPHY OF REGION I

Region 1

Total Pop. = 4,748,372

Total IP Pop. = 180,212

% of IP = 3.79%



Ilocos Norte

10,410

Ilocos Sur

88,978

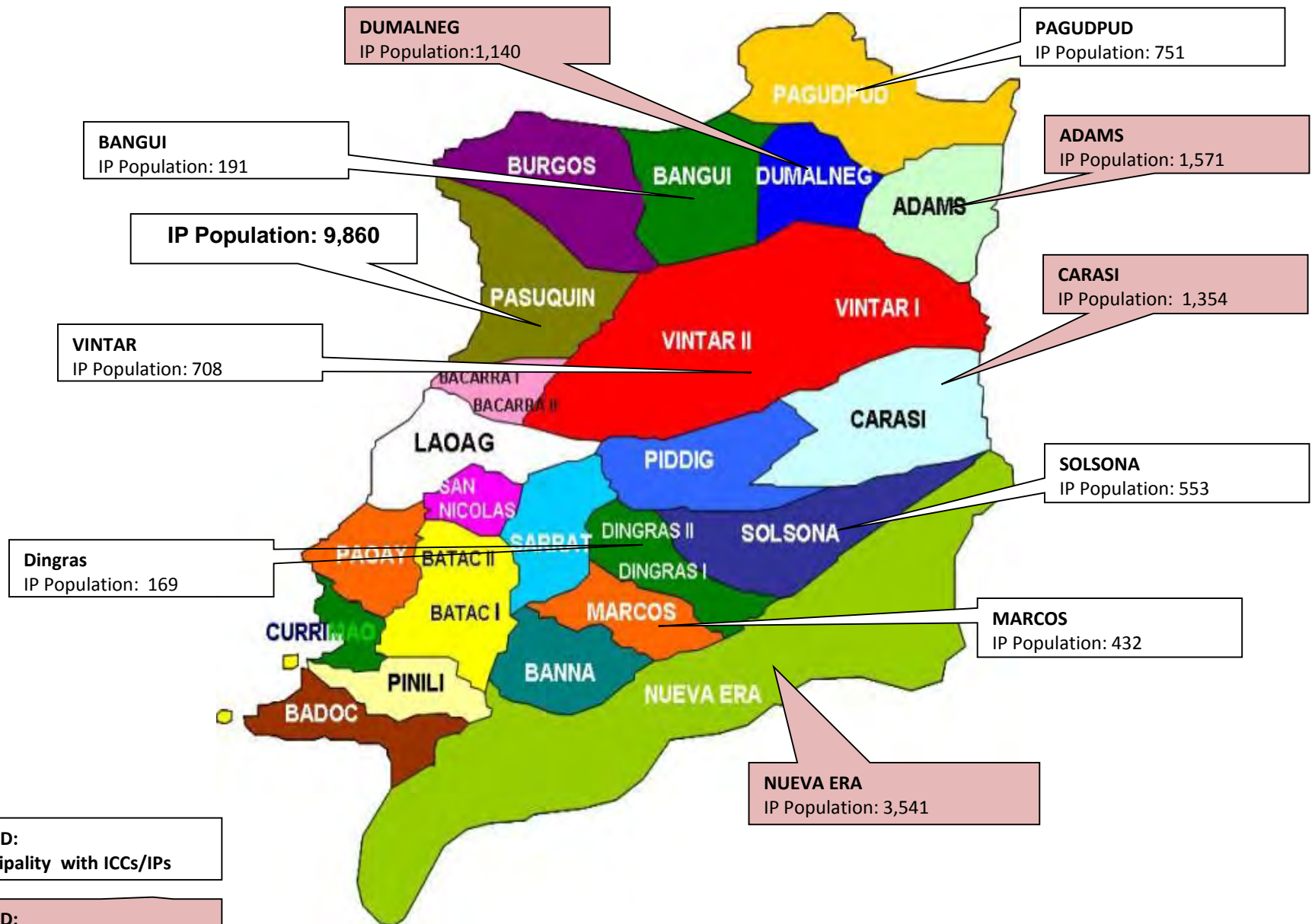
Pangasinan

13,808

La Union

67,016

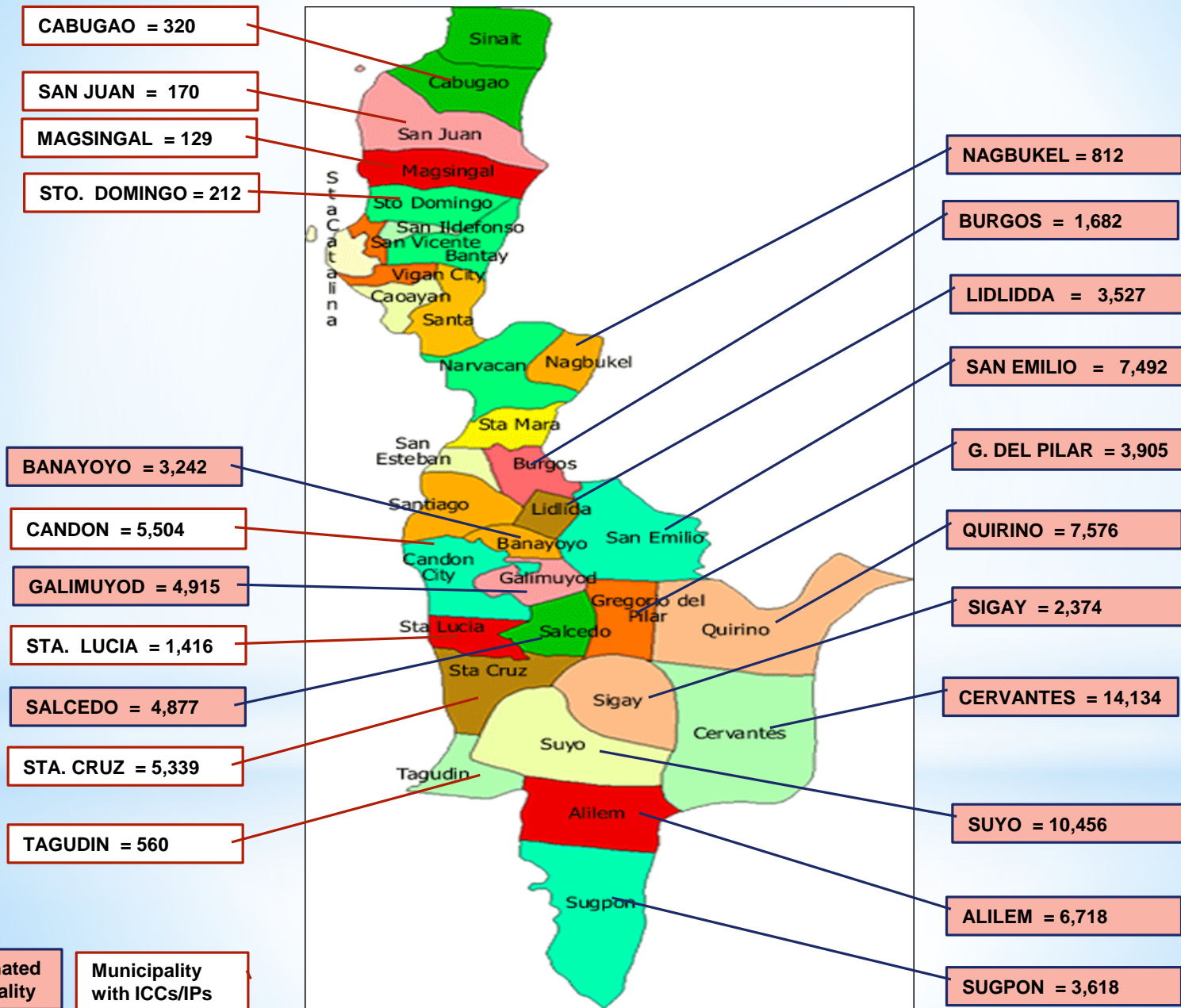
PROVINCE OF ILOCOS NORTE – IP POPULATION (10,410)



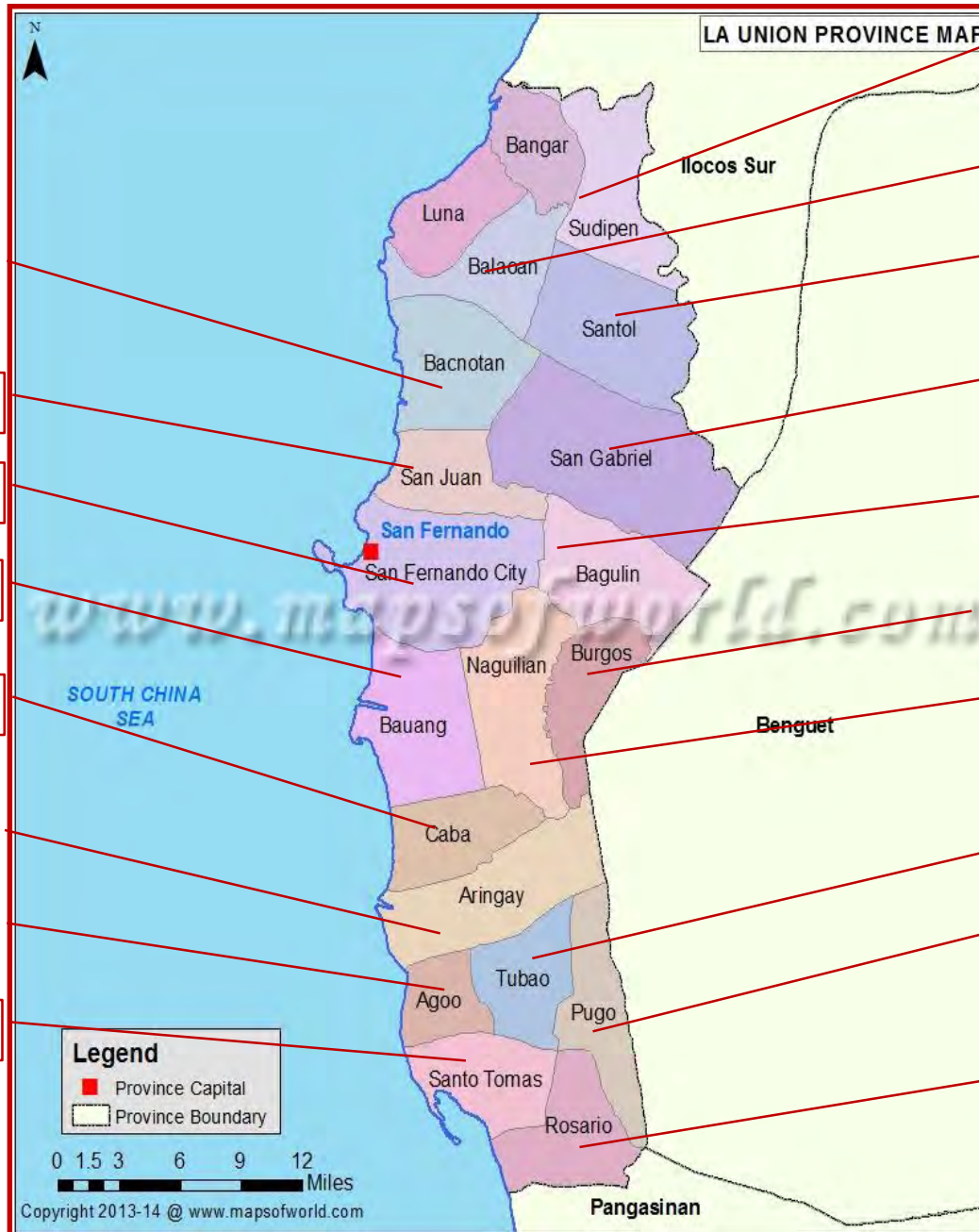
LEGEND:
Municipality with ICCs/IPs

LEGEND:
IP Dominated Municipality

PROVINCE OF ILOCOS SUR - IP POPULATION (88,410)



IP POPULATION (67,016)



Sudipen = 11,729

Balaoan = 312

Santol = 5,155

San Gabriel = 9,860

Bagulin = 11,056

Burgos = 3,146

Naguilian = 3,217

Tubao = 997

Pugo = 8,781

Rosario = 2,949

Bacnotan = 497

San Juan = 170

San Fdo. City = 3,604

Bauang = 2,517

Caba = 252

Aringay = 2,123

Agoo = 629

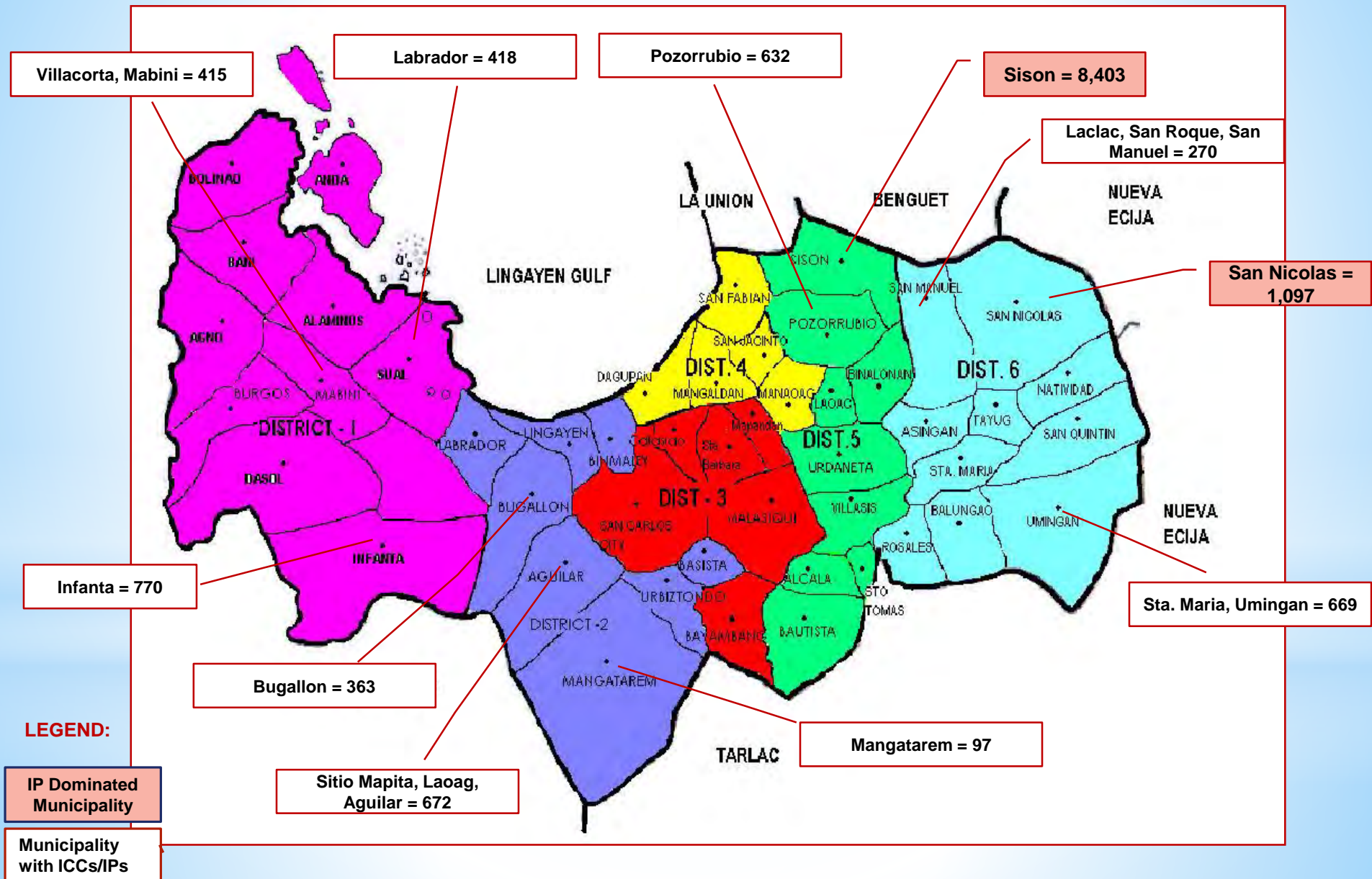
Santo Tomas = 472

LEGEND:

IP Dominated Municipality

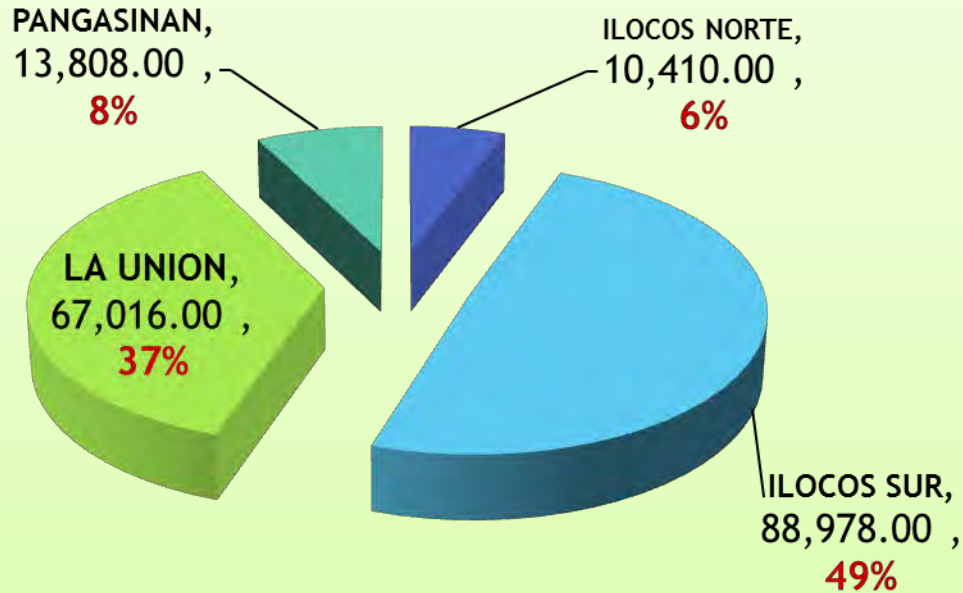
Municipality with ICCs/IPs

PROVINCE OF PANGASINAN - IP POPULATION (13,808)



DEMOGRAPHY OF REGION I

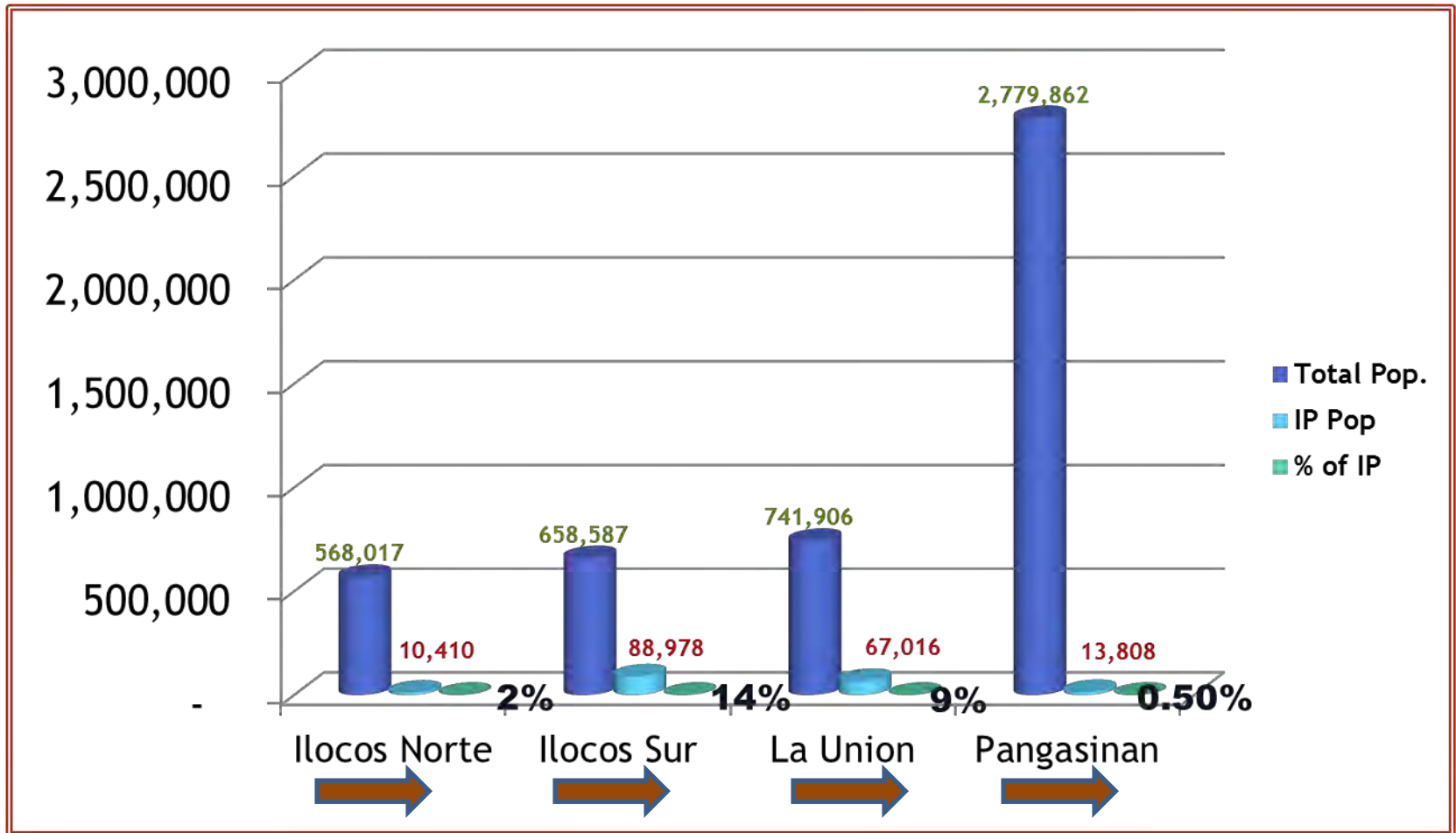
IP POPULATION



Total IP Pop. = 180,212

- The total IP population of Region 1 is **180,212** which is only **3.79%** of the total population of the region.
- Of this number, Province of Ilocos Sur has the largest number of IPs which is nearly 50% from the total IP population consisting of 88,978 IPs, the fact that the province covers 14 upland municipalities which are AD areas.
- The remaining 51% of the IPs are distributed in the Provinces of La Union, 37%; Pangasinan, 8% and Ilocos Norte, 6%.
- La Union consists of 6 IP dominated municipalities and AD areas, Pangasinan and Ilocos Norte have 4 IP populated municipalities and AD areas.

PERCENTAGE OF IP POPULATION BY PROVINCE



As gleaned from the chart, among the 4 provinces, Ilocos Sur has the highest percentage of IP population which is 14% constituting 88,978 IPs. On the other hand, Pangasinan has the least percentage of IP population which is only .50%. This is so because Pangasinan has the highest total population of 2.7M as compared with the province of Ilocos Norte which has 2% IP population comprising 10,410 IPs.

EXISTING ETHNOLINGUISTIC GROUPS BY PROVINCE

ILOCOS NORTE

10,410

Isnag, Kankanaey,
Isneg, Yapayao,
Tinguian, Imalawa

ILOCOS SUR

88,978

Kankanaey, Tinguian,
Bago

PANGASINAN

13,808

Kankanaey, Ibaloi,
Kalanguya, Iwak, Bago,
Applai

LA UNION

67,016

Bago, Kankanaey,
Ibaloi

